



TECH SPEC AND INFORMATION

USEFUL VENUE AND LOCAL INFO

LOAD IN/ PUBLIC ENTRANCE: 2-4 Hoxton Square,
London, N1 6NU

MAP: tinyurl.com/bs863r4

VENUE CONTACTS

VENUE PHONE NUMBER: +44(0)207 613 0709

GENERAL MANAGER: John O'Malley
john@hoxtonsquarebar.com
M: +44 7756 567782

TECH MANAGER: Andrew Karkoulis
tech.manager@hoxtonsquarebar.com
M: +44 7544 390069

VENUE BOOKER: Adam Taylor
adam.taylor@hoxtonsquarebar.com
M: +44 7576 940732

URLs

WEBSITE: hoxtonsquarebar.com
FACEBOOK: facebook.com/hoxtonsquarebar
TWITTER: twitter.com/hoxtonsquarebar
INSTAGRAM: instagram.com/hoxtonsquarebar

WIFI

NETWORK: www.hoxtonsquarebar.com
PASSWORD: onelove



TECH SPEC AND INFORMATION

LOAD IN AND OUT

- Load in is via the public entrance at the front of the venue off Hoxton Square, please note that the back exit can not be used to load out from due to arrangements with our neighbors
- Load in is generally available from 4:00pm - if early load in is needed please arrange in advance.
- Sound Checks cannot start until after 6:00pm Monday - Friday due to our noise curfew,
- Standard doors Monday to Friday are at 8pm to allow for a 2hr sound check - doors can be earlier if a 2hr s/c is not needed - please discuss in advance if needed.
- Saturday and Sunday -no sound curfew- please discuss in advance of load in time.

LIVE MUSIC CURFEWS

- Sunday — Thursday: 11pm
- Fri & Sat: 10pm - N.B. Please clear the stage ASAP prior to club nights Fri & Sat - DJs start straight after live acts finish.

PARKING: Parking is extremely limited in the local area; there are metered bays on Hoxton Square itself, as well as in the surrounding streets. Some free parking available after 6pm on Arnold Circus: tinyurl.com/dxtptsr
Please give advance notice if a band is travelling in anything bigger than a splitter van. It is tight getting a fully sized tour bus onto the square.

PASSES: Either the venue manager or promoter's rep will issue passes on the day of the show.

PRESS: If you are intending on doing meets and greets, interviews or the like, please inform the venue's general manager and promoter's rep as far in advance as possible.



TECH SPEC AND INFORMATION

- FACILITY FEE:** The venue withholds its right to apply a facility fee for any audio or visual recording taking place, please discuss in advance if commercial recording is going to take place. A noncommercial waiver is available from the Booker/ General Manager.
- SUPERMARKETS:** Sainsbury local, 2 minute walk away, on Old Street.
- LAUNDRETTE:** 20B Pitfield Street, 2 minute walk from the venue
- CATERING:** We have catering onsite, where promoters can take advantage of a discount.
- VISITING CONSOLES:** If you are bringing in a FOH or monitor console this must be advanced with us. There's space for a monitor board stage left. You will need to bring your own splits. There's limited room at FOH especially if the show is sold out so please contact us about it as early as possible and we'll try to make it as easy as possible for all the acts playing.
- BACKLINE:** We have no backline at the venue, for any hire please contact:
Matt Snowball Music: +44(0) 207 700 6555
FX Rental: +44(0)20 8746 2121
If you'd like to leave gear at the venue overnight please contact the Venue Booker / General Manager in advance.
- POSTERS:** Please supply A3 portrait posters for our boards, A6 flyers preferred.
- LIVE ROOM CAPACITY:** Sellable to 300 including guests list.
- AGE RESTRICTION:** No Age Restriction is applied to the live room – Sunday to Wednesday, please note that all customers under the age of 18 will need to be escorted by a ticket holding adult. Thursday to Saturday is strictly 18+. If you are looking to hold a show where by the majority of the audience will be minors, please discuss in advance with the general manager to see if extra security is required to adhere to the licensing conditions.
- DRESSING ROOMS:** We have a lockable dressing room that's positioned stage right. No showers.
- MERCHANDISE:** To be displayed next to box office/ entrance to venue room, no fees.
- WIRELESS:** Available across the venue.



TECH SPEC AND INFORMATION

PA SYSTEM / FOH MIXING

- SYSTEM CONTROL: 1 x Symetrix Solus 8
- FOH: 2 x Tannoy VQ100 mid/tops
1 x Lab Gruppen PL10000Q with Lake Processing
2 x Tannoy VS218DR subs
1 x Lab Gruppen PL20000Q with Lake Processing
- MONITORS: 5 mixes total: 4 floor, 1 drum top/sub
7 x Tannoy VX15HP wedges
1 x Tannoy VSX15DR (sub)
8 x LabGruppen IPD2400
- MIXING CONSOLE: Soundcraft V11
(32 in/16 out - house uses 9 O/P for FOH and monitors and 2 I/P
31 & 32 for walk in music)
32 in/8 return analogue multi
- MICROPHONES: 1 x Shure Beta 52
2 x Sennheiser E604 clip on
1 x Audix D2 clip on
1 x Shure SM81 condenser
1 x Shure PG81 condenser
1 x Beyers M88TG
- 2 x Sennheiser E906
8 x Shure SM57
10 x Shure SM58
1 x Shure Beta 58
2 x Røde M5
- D.I BOXES: 5 x BSS AR133 active DI boxes
1 x Behringer active DI box
4 x Behringer DIs in a rack unit
- D.J. EQUIPMENT: 1 x DJM900 Nexus mixer
2 x Pioneer CDJ2000 Nexus CDJs (can be linked)
2 x Technics 1200 turntables*
1 x Allen+Heath Xone 92 mixer
2 x Pioneer CDJ900 CDJs (can be linked)
2 x Technics 1210 turntables*
1 x QSC K10 active monitor (bar)

*DJs need to provide their own slipmats, carts and styluses, thanks!



TECH SPEC AND INFORMATION

LIGHTING SPECIFICATIONS

CONTROL: 1 x Avolites Tiger Touch console

LIGHTS: 4 x Chauvet Intimidator Scan LED 300 (Walls)
4 x Chauvet Q Spot 460 LED (Front Truss)
4 x Chauvet Q Wash 560Z LED (Front Truss)
6 x Chauvet Colorbar SMD (Back Truss)
2 x LED Strobes (Back Truss)
1 x Haze Machine (Stage Left)

PROJECTIONS

1 x Mitsubishi 5000 lumens projector hung from the front truss projecting onto a screen on the back wall. Connection through VGA or HDMI cables which come down in the DJ booth stage left. If you need us to run these cables out to FOH please let us know in advance. If you are using an Apple product to project from you'll need to supply the appropriate Apple>HDMI/VGA adaptor.

STAGE DIMENSIONS

WIDTH AT BACK OF STAGE: 5.4m

WIDTH AT FRONT OF STAGE: 4.9m (with a stair case coming up on the left hand side - 0.9m x 0.9m)

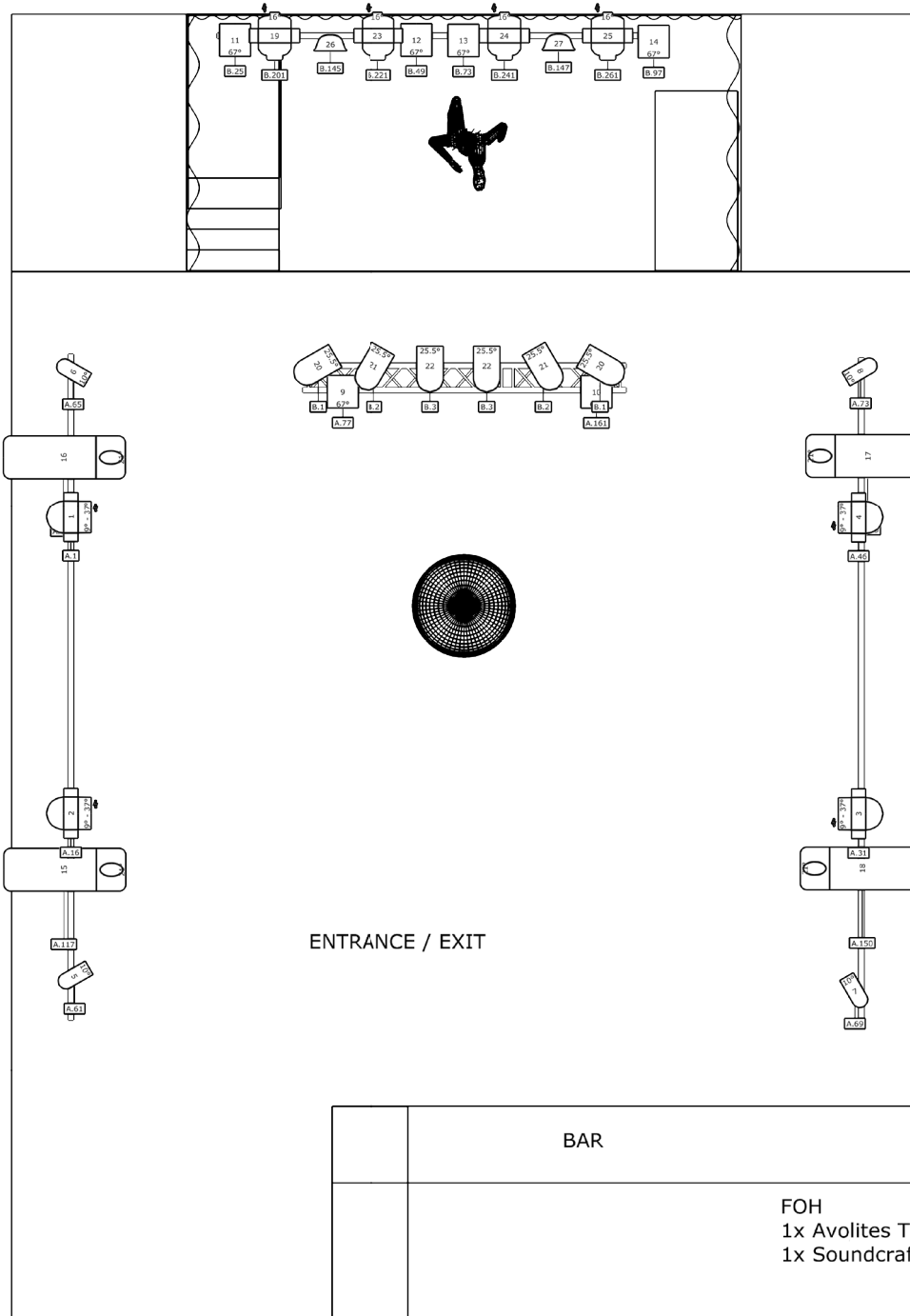
DEPTH OF STAGE: 2.5m

HEIGHT OF STAGE: 1m







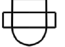
HEIGHT FROM STANDING ON
THE STAGE TO THE CEILING: 3m



TECH SPEC AND INFORMATION



Symbol key

- | | | | | | | | |
|-------------------------------------------------------------------------------------|--------------|-------------------------------------------------------------------------------------|-------------------------------------------------------------|-------------------------------------------------------------------------------------|-----------------|---------------------------------------------------------------------------------------|-------------|
|  | Par 64 Short |  | Intimidator Scan LED 300 |  | Q-Spot 460-LED |  | Impulse 648 |
|  | COLORbar SMD |  | Stairville CB-100 Color Beam (3D CAD Patched as Par 20 LED) |  | Q-Wash 560Z LED | | |